



Realtors • Auctioneers • Advisors

AUCTION

LEADING THE INDUSTRY SINCE 1945

FRIDAY – OCTOBER 16, 2020 – 1:00 PM

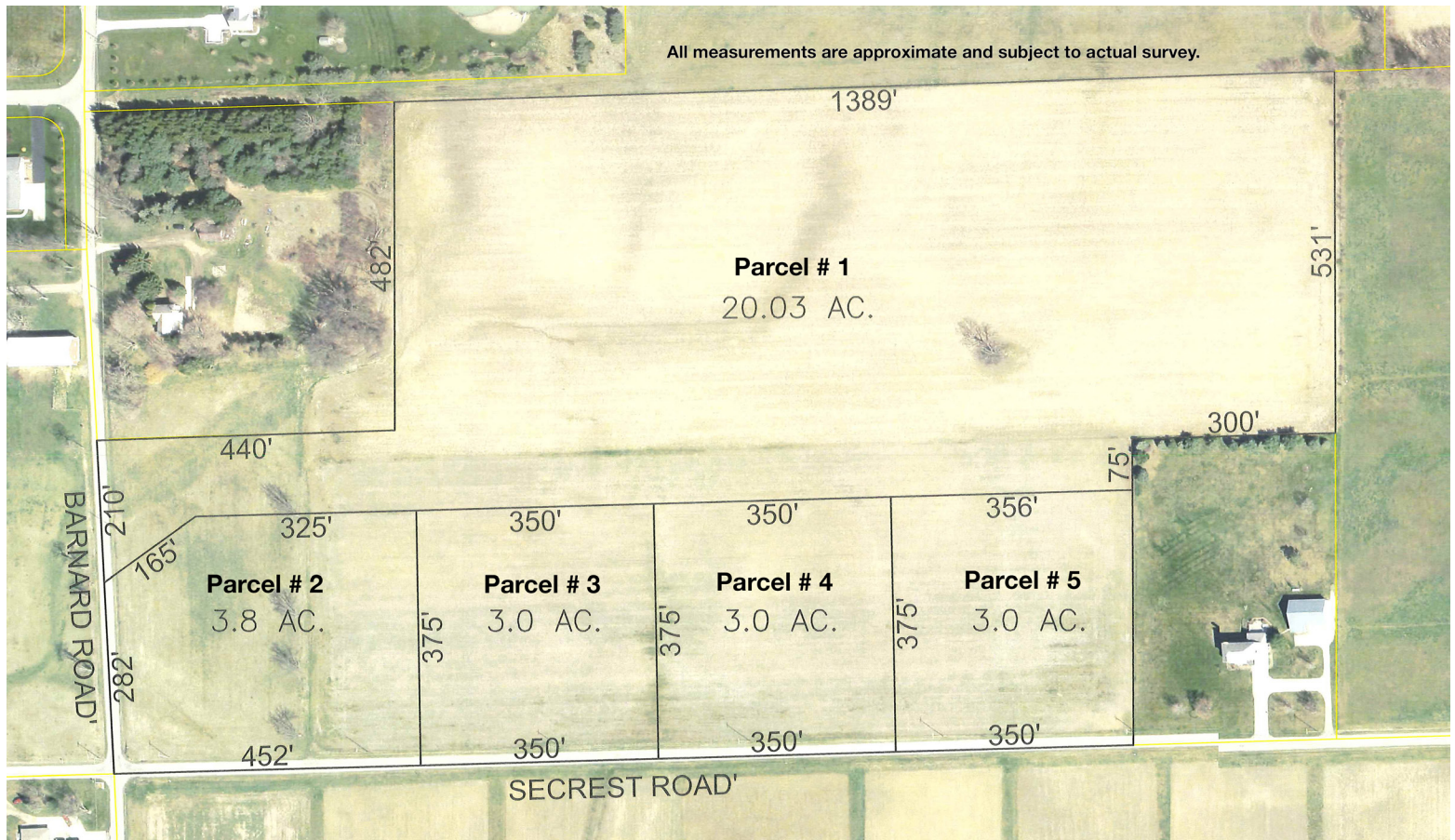
33 Acres Open Land Offered In 5 Parcels

EXCITING REAL ESTATE OPPORTUNITY! - ELEANOR "JEAN" LONG ESTATE
East Union Twp. – Wayne County – Southeast School District
On-site And Online Bidding Available

All sells to settle the estate. Location:

Corner of Barnard Rd. & Secrest Rd., Apple Creek, OH 44606

Directions: From US RT-30, take the Apple Creek Rd. exit and head south 1.8 miles to Secrest Rd. and head west to auction OR from RT-250 at Apple Creek, head north on Apple Creek Rd. for 2 miles then west on Secrest Rd. to auction. Watch for KIKO signs.



Information is believed to be accurate but not guaranteed. KIKO Auctioneers

800-533-5456 | kikoauctions.com





2722 Fulton Dr. NW, Canton, OH 44718
kikoauctions.com

Friday – October 16, 2020 – 1:00 PM

EXCITING REAL ESTATE OPPORTUNITY!

33 Acres Open Land – To Be Offered In 5 Parcels
East Union Twp. – Wayne County
Southeast School District
On-site And Online Bidding Available

Real Estate: 33 Acres gently rolling cropland. Corner parcel. Road frontage on Secrest Rd. and Barnard Rd. All mineral rights owned by seller to transfer. Wayne Co. Tax ID# 27-00254.000. Land to be offered bidders choice as follows:

- Parcel #1:** 20 acres productive cropland, well drained, 210 ft. frontage on Barnard Rd.
Parcel #2: 3.8 acres, corner parcel, 282 ft. frontage on Barnard Rd. and 452 ft. frontage on Secrest Rd.
Parcel #3: 3.0-acre parcel open land, lays nice, approved building site, 350 ft. frontage on Secrest Rd.
Parcel #4: 3.0-acre parcel open land, lays nice, approved building site, 350 ft. frontage on Secrest Rd.
Parcel #5: 3.0-acre parcel open land, lays nice, approved building site, 350 ft. frontage on Secrest Rd.



Land is a good investment you can enjoy! Parcels will be offered separate then together and will sell whichever way brings the most. Bank financing available to qualified buyers.

Terms On Real Estate: 10% down auction day, balance due at closing. Any desired inspections must be made prior to bidding. All information contained herein was derived from sources believed to be correct. Information is believed to be accurate but not guaranteed. Property to be offered as a Multi Par auction and sold whichever way it brings the most.

Auction By Order Of: Frederick E. and William H. Long, co-executors of the Eleanor “Jean” Long Estate, Portage Co.
Probate Case #: 2020-ES-158



Apprentice Auctioneer/Realtor®
KRISTEN KIKO
330-234-7110
kristen@kikocompany.com



Auctioneer/Realtor®
PETER R. KIKO SR.
330-705-5996
peter@kikocompany.com

800-533-5456 | kikoauctions.com

